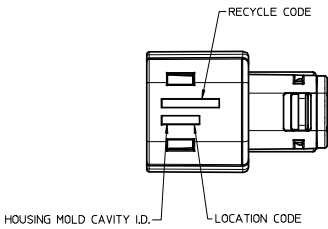
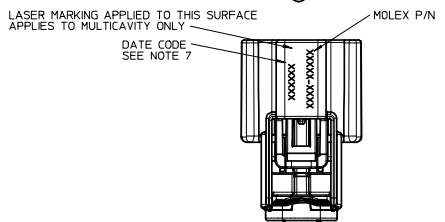
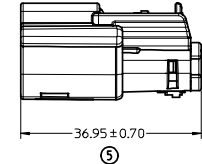
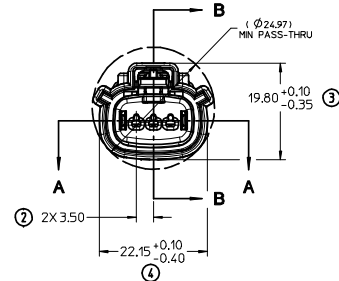
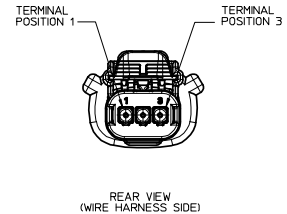
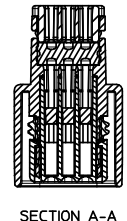
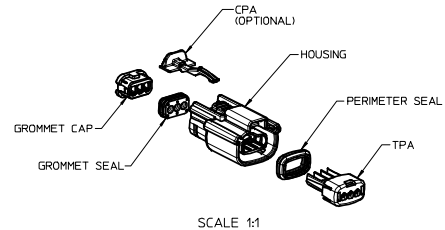
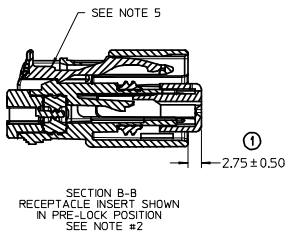
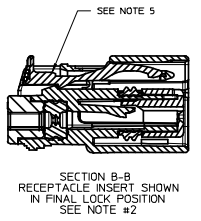
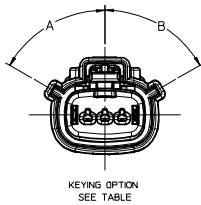


ASSEMBLY PART NUMBER	COLOR	KEYING OPTION	DIMENSIONS (DEGREES)		GAVITY TYPE & FINISH X = PLUGGED			CPA
			A	B	1	2	3	
33471-0301	BLACK	A	60	60				-
33471-0302	LT.GRAY	B	60	35				-
33471-0303	BROWN	C	35	60				-
33471-0304	GREEN	D	35	35				-
33471-0305	CUSTOM	TBD	TBD	TBD				-
33471-0306	BLACK	A	60	60				YES
33471-0307	LT.GRAY	B	60	35				YES
33471-0308	BROWN	C	35	60				YES
33471-0309	GREEN	D	35	35				YES
33471-0310	CUSTOM	TBD	TBD	TBD				YES
33471-0311	BLACK	A	60	60			X	-
33471-0312	LT.GRAY	B	60	35			X	-
33471-0313	BROWN	C	35	60			X	-
33471-0314	GREEN	D	35	35			X	-
33471-0315	CUSTOM	TBD	TBD	TBD			X	-
33471-0316	BLACK	A	60	60			X	YES
33471-0317	LT.GRAY	B	60	35			X	YES
33471-0318	BROWN	C	35	60			X	YES
33471-0319	GREEN	D	35	35			X	YES
33471-0320	CUSTOM	TBD	TBD	TBD			X	YES
33471-0321	BLACK	A	60	60			X	-
33471-0322	LT.GRAY	B	60	35	X	X		-
33471-0323	BROWN	C	35	60	X	X		-
33471-0324	GREEN	D	35	35	X	X		-
33471-0325	CUSTOM	TBD	TBD	TBD	X	X		-
33471-0326	BLACK	A	60	60	X	X		YES
33471-0327	LT.GRAY	B	60	35	X	X		YES
33471-0328	BROWN	C	35	60	X	X		YES
33471-0329	GREEN	D	35	35	X	X		YES
33471-0330	CUSTOM	TBD	TBD	TBD	X	X		YES
33471-0331	BLACK	A	60	60	X	X		-
33471-0332	LT.GRAY	B	60	35	X	X		-
33471-0333	BROWN	C	35	60	X	X		-
33471-0334	GREEN	D	35	35	X	X		-
33471-0335	CUSTOM	TBD	TBD	TBD	X	X		-
33471-0336	BLACK	A	60	60	X	X		YES
33471-0337	BLACK	A	60	60	X	X		-
33471-0338	BLACK	A	60	60	X	X		YES
33471-0339	BLACK	A	60	60	X	X		-
33471-0340	LT.GRAY	B	60	35				YES
33471-0341	LT.GRAY	B	60	35			X	YES



NOTES: UNLESS OTHERWISE SPECIFIED

- DESIGNED TO MATE WITH THE BLADE HOUSING ASSEMBLY SPECIFIED IN MOLEX CHARTED DRAWING SD-33461-031 OR DEVICE CONNECTION AS SPECIFIED IN DRAWING E-33581-031.
- ASSEMBLY SHIPPED WITH RECEPTACLE INSERT IN PRE-LOCK POSITION (SEE SECTION B-B PRE-LOCK). UPON FULL TERMINAL ASSEMBLY, EACH RECEPTACLE INSERT MUST BE SNAPPED INTO ITS FINAL-LOCK POSITION.
- FOR RECEPTACLE TERMINALS TO BE USED WITH THIS ASSEMBLY, SEE DRAWING SD-33012-002.
- SYSTEM TO BE USED WITH WIRE WITHIN DIAMETER RANGE OF 1.5mm TO 2.5mm.
- OPTIONAL CPA SHOWN IN ALL VIEWS. SEE TABLE FOR SPECIFIC ASSEMBLY OPTION AND NUMBER.
CPA MUST BE INSERTED TO THE PRE-LOCK POSITION, AS SHOWN IN SECTION B-B. WHEN SEATED CORRECTLY, CPA DOES NOT MOVE FREELY.
ENGAGEMENT FORCE TO MOVE CPA FROM PRE-LOCK TO FINAL LOCK POSITION WHEN UNMATED: 40N MIN.
DISENGAGEMENT FORCE TO MOVE CPA FROM FINAL LOCK TO PRE-LOCK POSITION: 3N MIN.

- MATERIAL: SPS/NYLON BLEND, 20% GLASS FILLED.
- DATE CODE: FIRST TWO DIGITS IS CALENDAR YEAR, THRO THROUGH FIFTH DIGIT IS DAY NUMBER OF THE CALENDAR YEAR. (FEB 3RD=03A).
- CHENGDU ASSEMBLIES SHALL CONFORM TO PACKAGING SPECIFICATION PK-31300-635
- SHALL CONFORM TO PRODUCT SPECIFICATION PS-33471-000.
- PACKAGING: IN THE EVENT THAT INSERT IS FOUND IN THE SEATED (FINAL LOCK) POSITION, REFER TO MOLEX SPECIFICATION PS-34646-001, AVAILABLE AT WWW.MOLEX.COM.

INSPECTION NUMBER LOG
LAST NUMBER USED: 5
ADDED:
REMOVED:

REVISED E.C. NO: UAU2009-0011 2008/08/14 DRAWN/MLCK CHKD/SYERZYL 2008/08/19 APPR./VOSHY 2008/08/21	QUALITY SYMBOLS ▽=0 ▽=0	GENERAL TOLERANCES (UNLESS SPECIFIED): mm INCH 4 PLACES ± --- + --- 3 PLACES ± --- + --- 2 PLACES ± 0.1 + --- 1 PLACE ± 0.30 + --- ANGULAR ± 3 °		DIMENSION STYLE MM ONLY DRAWN BY: DMARCOUX DATE: 06/18/2002 CHECKED BY: DGRIFITHS DATE: 6/18/2002 APPROVED BY: FHOLUB DATE: 06/18/2002		SCALE: 2:1 DESIGN UNITS: METRIC THIRD ANGLE PROJECTION		TITLE: MX150 STANDARD CONNECTOR RCPT 1 ROW HOUSING SEALED, 3 WAY	
		DRAFT WHERE APPLICABLE MUST REMAIN WITHIN DIMENSIONS		MATERIAL NO. SEE CHART SIZE: D		MOLEX INCORPORATED DOCUMENT NO. SD-33471-031 SHEET NO. 1 OF 1		THIS DRAWING CONTAINS INFORMATION THAT IS PROPRIETARY TO MOLEX INCORPORATED AND SHOULD NOT BE USED WITHOUT WRITTEN PERMISSION	